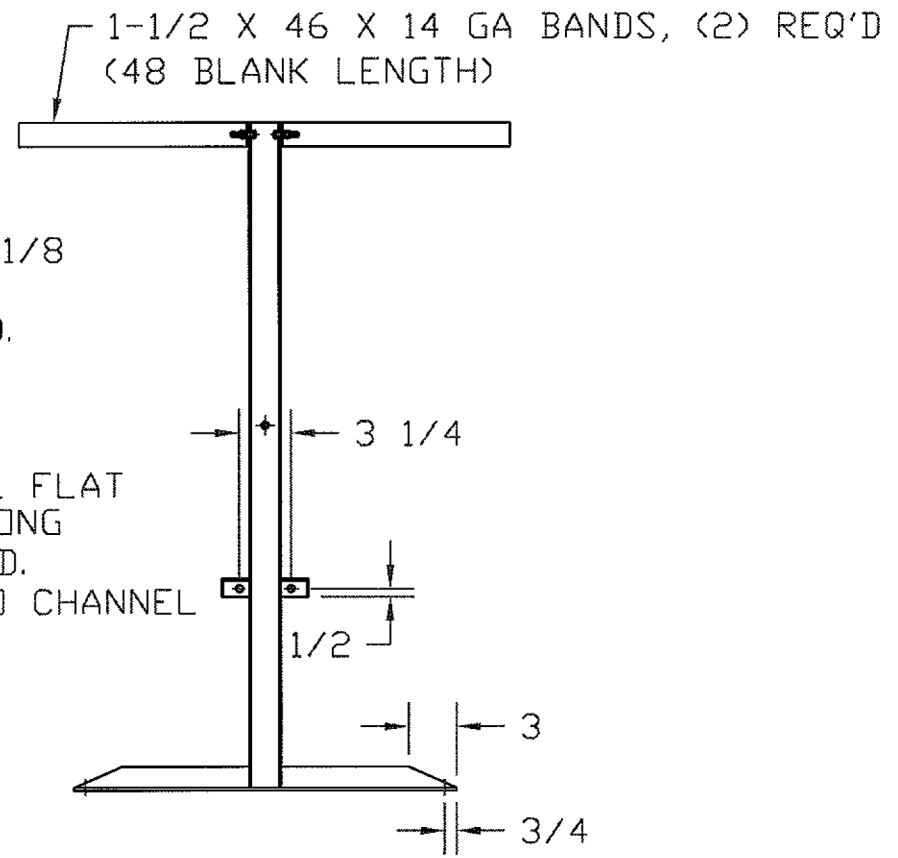
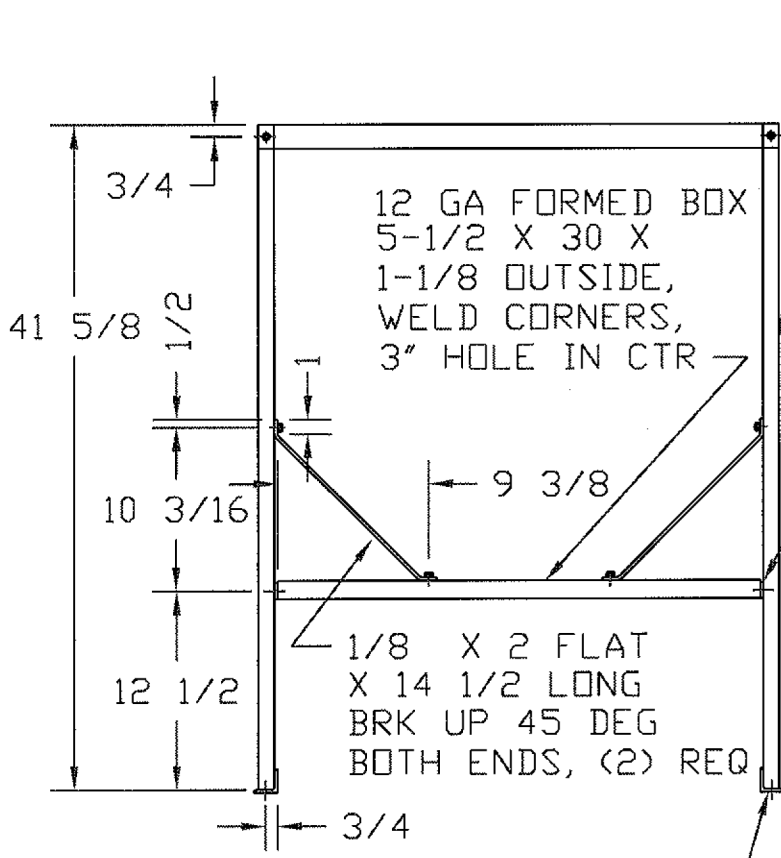


HARDWARE:


- (12) HEX HEAD CAP SCREWS, 5/16 X 1-1/4
- (12) 5/16 LOCK WASHERS
- (12) 5/16 HEX NUTS

REVISIONS				
ZONE	REV	DESCRIPTION	DATE	APPROVED
	A	WAS BLUE	27FEB02	



1-1/2 X 1-1/2 X 3/16 ANGLE,
24 LONG, WELD TO CHANNELS
(2) REQ'D.

NOTE: ALL HOLES 3/8 DIA.
FINISH ALL STEEL PARTS WITH
BLACK ENAMEL

JTP 29JUL96			
		60 GALLON INDUCTOR TANK STAND	
SIZE A	FSCM NO.	DWG NO.	REV A
SCALE 1/12		SHEET	